



# MasterClass LEDtube InstantFit T8

8.5T8/MAS/36-835/IF13/P 10/1

## Product data

General Information	
Cap-Base	G13 [ Medium Bi-Pin Fluorescent]
Nominal Lifetime (Nom)	70000 h
Switching Cycle	50000X
B50L70	70000 h

Light Technical	
Color Code	835 [ CCT of 3500K]
Beam Angle (Nom)	180 °
Initial lumen (Nom)	1300 lm
Luminous Flux (Rated) (Nom)	1300 lm
Rated Beam Angle	180 °
Correlated Color Temperature (Nom)	3500 K
Color Consistency	<6
Color Rendering Index (Nom)	80
LLMF At End Of Nominal Lifetime (Nom)	70 %

Operating and Electrical	
Input Frequency	20K to 120K Hz
Power (Rated) (Nom)	8.5 W
Starting Time (Nom)	0.5 s
Warm Up Time to 60% Light (Nom)	0.5 s
Power Factor (Nom)	0.9

Voltage (Nom)	120-277, 347 V
---------------	----------------

Temperature	
T-Ambient (Max)	45 °C
T-Ambient (Min)	-20 °C
T-Storage (Max)	65 °C
T-Storage (Min)	-40 °C
T-Case Maximum (Nom)	50 °C

Controls and Dimming	
Dimmable	No

Mechanical and Housing	
Product Length	900 mm

Approval and Application	
Energy Saving Product	Yes
Approbation Marks	RoHS compliance UL certificate DLC compliance

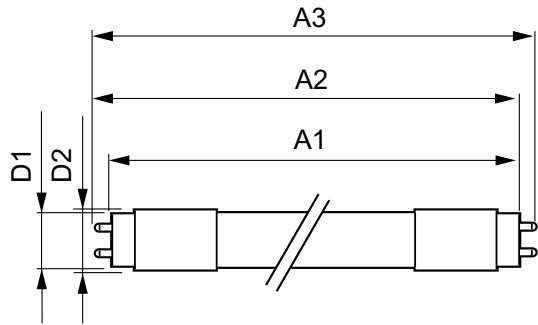
Product Data	
Order product name	8.5T8/MAS/36-835/IF13/P 10/1
EAN/UPC - Product	046677539863
Order code	539866
Numerator - Quantity Per Pack	1

# MasterClass LEDtube InstantFit T8

Numerator - Packs per outer box	10
Material Nr. (12NC)	929001967904
Net Weight (Piece)	0.160 kg

Model Number	9290019679
--------------	------------

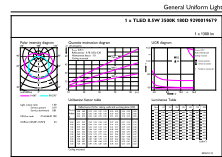
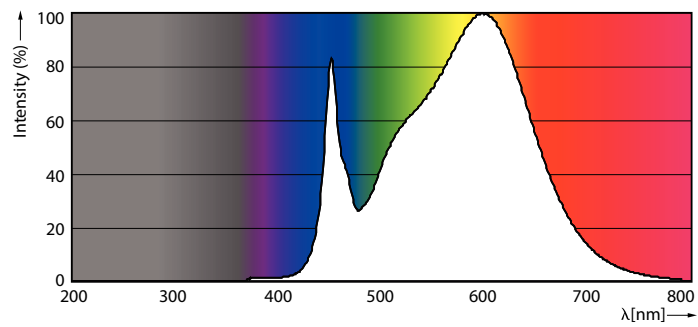
## Dimensional drawing



3ft U bent

Product	D1	D2	A1	A2	A3
8.5T8/MAS/36-835/IF13/P 10/1	25.7 mm	26.3 mm	893.4 mm	900.5 mm	907.6 mm

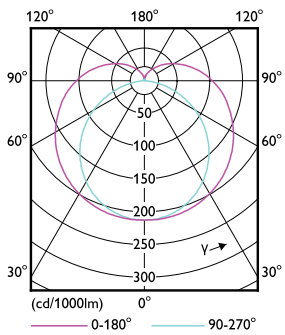
## Photometric data



General Uniform Lighting

G13 3500K 1300lm

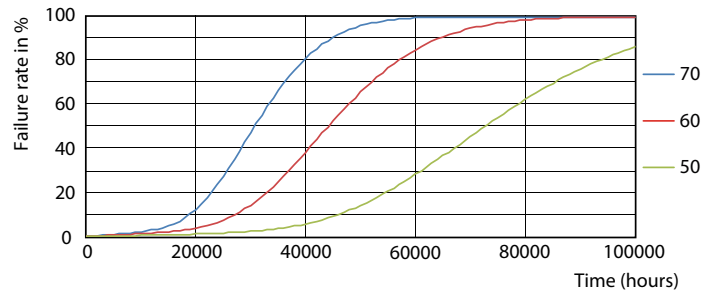
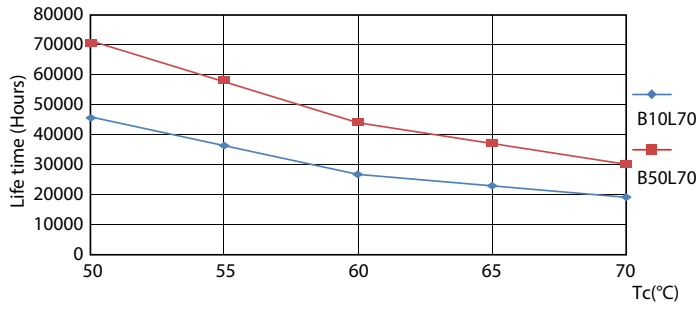
G13 3500K 1300lm



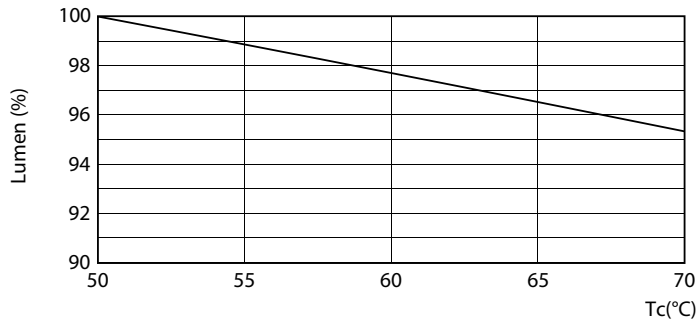
G13 3000K

# MasterClass LEDtube InstantFit T8

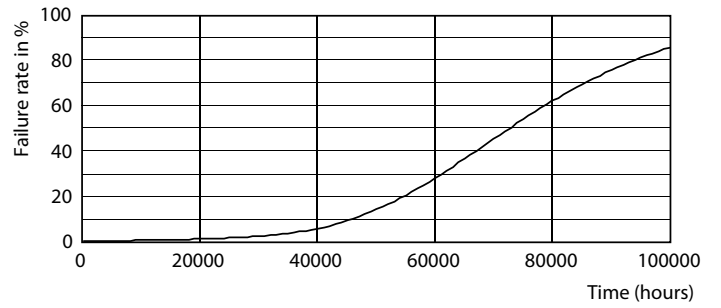
## Lifetime



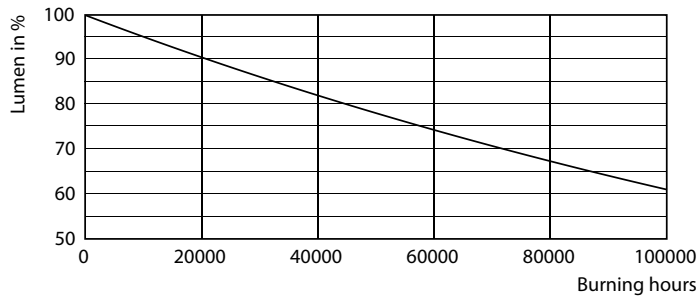
### G13 3000K



### G13 3000K



### G13 3000K 1300lm



### G13 3000K

### G13 3000K

## MasterClass LEDtube InstantFit T8

