

Core & Coil (71A) HPS 200W - 400W

CORE & COIL HID HPS BAL 250W S50 5-TAP KIT

The basic ballast is the open core and coil which is most often used as a component within a lighting luminaire. The core and coil also forms the nucleus of Philips Advance's five other ballast configurations.

Product data

• General Information

ANSI Code	S50
Lamp Type	250W HPS
Number of Lamps	1 piece/unit
Circuit Type	CWA
Ballast Type	Magnetic HID
Base Model	71A8251
Core Size	4 x 4 (2 coil)
Suitable For Outdoor Use	Yes
Ignitor Catalog Number	LI501-H4
Ignitor Temperature Rating	105°C
Capacitor Value	35 MFD
Capacitor Catalog Number	7C350P24RA
Capacitor Requirements	240V
Capacitor Temperature Rating	105°C
Capacitor Diameter/Oval Dimensions	1.65 in
Capacitor Height	3.7 in
Automatic Restart	No

• Operating and Electrical

Input Voltage	120/208/240/277/480 V
Input Frequency	60 Hz
Inp. Current (Open Circuit)	1.82/1.1/0.92/0.83/0.45 A
Input Current (Starting)	1.32/0.82/0.66/0.56/0.32 A
Input Current (Short Circuit)	0.81-1.22/0.44-0.66/0.39-0.58/0.32-0.49/0.2-0.3 A

Secondary Short Circuit Current	3.69-4.51 A
Constant Wattage Deviation	Within Trapezoid
Ballast Factor (Nom)	1
Power Factor (Nom)	0.90
Nominal Open Circuit Voltage	188 V
Input Current (Operating) (Nom)	2.66/1.54/1.32/1.16/0.66 A A
Input Power (Nom)	300 W
Rated Lamp Watts	250W W

• Wiring

Wire Striplength	0.5 mm
Wire Length By Color	12"
Wire Type	Stranded
Remote Wiring Configuration Allowed	Yes
Max Ballast-Lamp Distance Remote Wiring	2'
Recommended Fuse Value	7/4/4/3/2 A

• Approval and Application

Open Circuit Voltage Test (Volts)	169-207 V
Approbation Marks	ULR CSA certificate RoHS Compliant C/C/B/B/B
Temperature Marking	

PHILIPS

Core & Coil (71A) HPS 200W - 400W

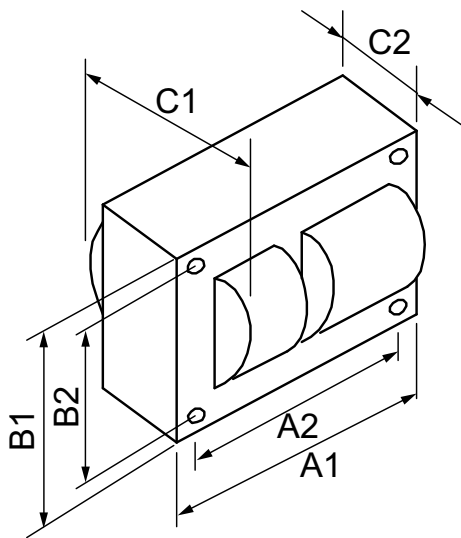
UL Recognized	Yes
Hipot Test (1 Minute)	2000 V
Hipot Test (2 Seconds)	2500 V
UL Insulation Class	H(180°C)
UL Temperature Code	1029C

EAN/UPC - Product	781087114193
Order code	71A8251001D
Numerator - Quantity Per Pack	1
Numerator - Packs per outer box	1
Material Nr. (12NC)	913710414701
Net Weight (Piece)	6.184 kg

• Product Data

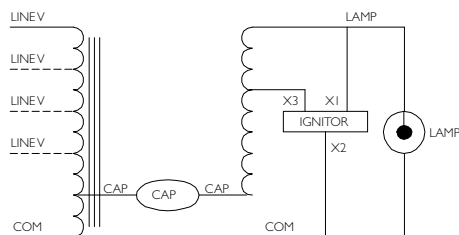
Order product name CORE & COIL HID 71A8251001D

Dimensional drawing



HPS BAL 250W S50 5-TAP KIT

Product	C1	C2	A1	A2	B1	B2
CORE & COIL HID 71A8251001D	3.6 in	2 in	4.8 in	4.4 in	4.3 in	3.9 in



© 2016 Philips Lighting Holding B.V.
All rights reserved.

Specifications are subject to change without notice. Trademarks are the property of Koninklijke Philips N.V. (Royal Philips) or their respective owners.

www.philips.com/lighting

2016, February 1
data subject to change